



SUPPLEMENTAL NUTRITION ASSISTANCE PROGRAM (SNAP)

WWW.DHS.STATE.US.IL

WHAT IS SNAP?



SNAP, formerly called Food Stamps, is a federal program that supplements the food budgets of households with low income so they can be more independent, work towards self-sufficiency, and prepare nutritious meals.

SNAP benefits are funded with federal dollars and regulated through the US Department of Agriculture (USDA).

SNAP is the first line of defense against hunger.



SNAP supplements the food budget of families in need so they can purchase healthy food.

SNAP recipients may receive employment and training services to help them move to stable, long-term employment.

SNAP keeps older adult family members independent. For seniors, participation can improve nutritional status and overall health.

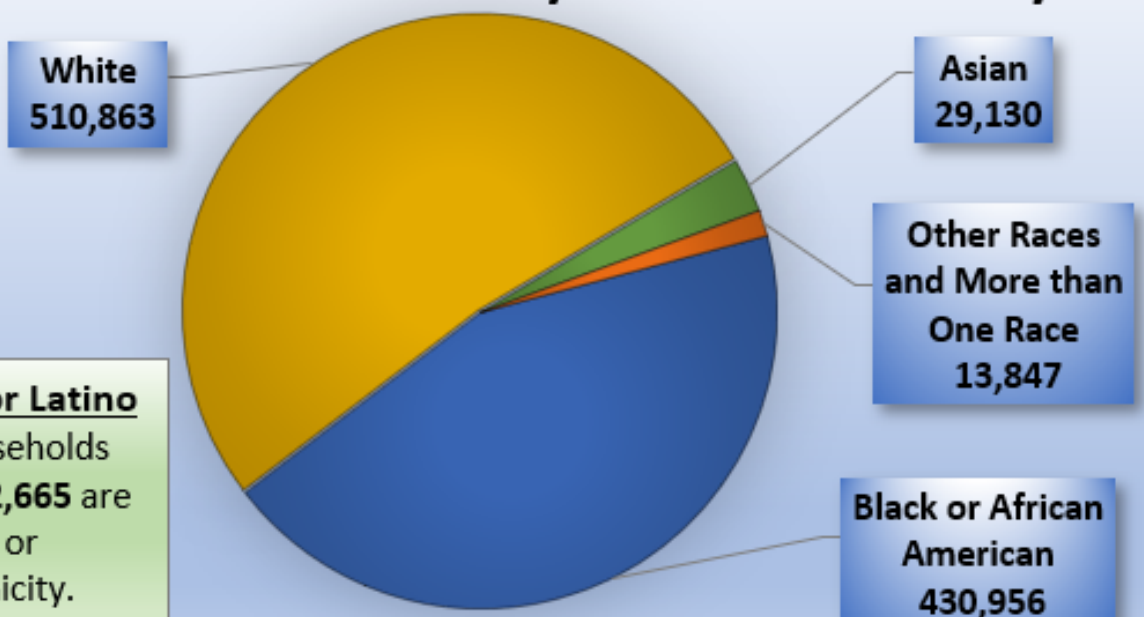
WHO DO WE SERVE?

Serving participants

- age 60 or older -
- Children -
- Families -
- Working poor -
- Immigrants -



Illinois SNAP Households by Race and Ethnicity



Hispanic or Latino
Of the households shown, **132,665** are of Hispanic or Latino ethnicity.

*SNAP Households which self-identified race and ethnicity.

SNAP is a valuable resource for households with low income, local retailers, and local communities in Illinois.



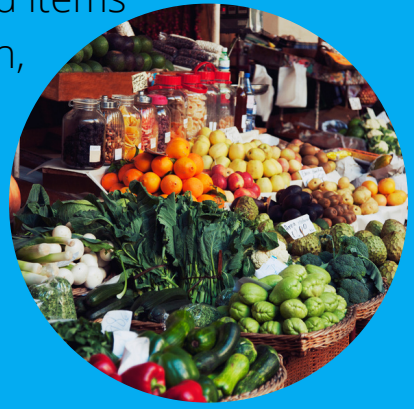
Benefits are issued monthly to eligible households via an Electronic Benefits Transfer (EBT) card.

This card is also called a "Link" card and can be used at authorized grocery, retail stores, and thousands of farmers' markets nationwide.

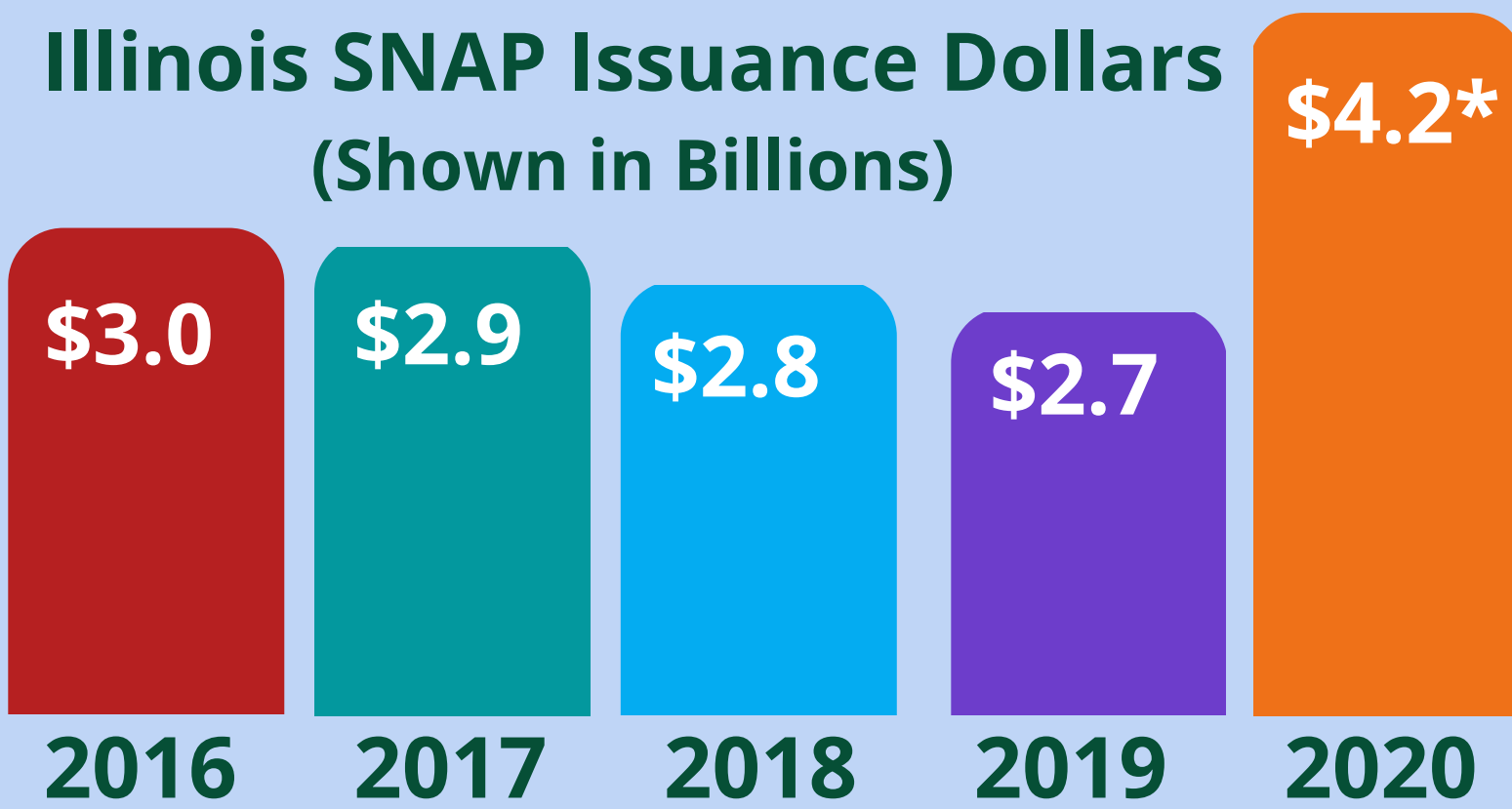
Illinois SNAP families have the option to purchase eligible food items online at participating food retailers such as Walmart, Amazon, and Aldi. New retailers are always being added.

For more information, visit

<https://www.dhs.state.il.us/page.aspx?item=129592>.



Illinois SNAP Issuance Dollars (Shown in Billions)



*For 2020, this includes \$1.2 billion dollars issued to Illinois families as part of the Families First Coronavirus Response Act (FFCRA).

HOW TO APPLY?

The Illinois SNAP Program is administered through the Department of Human Services, Division of Family and Community Services. There are 69 Family Community Resource Centers (FCRCs) throughout the State, available and ready to assist applicants.



Email applications to the office or submit applications online at <http://abe.illinois.gov>.

Call an office to schedule an appointment to apply.



Walk in to an office and apply. Applicants can even print and carry application to the office.

Mail the application to:
Central Scan Unit (CSU)
P.O. Box 19138, Springfield, IL 62763-9138



If you need help with an application, please call our toll-free line at
1-800-843-6154 (Voice),
Nextalk 1-800-324-5553,
711 TTY Relay